

Horizon FD87 - YACHT_OF_THE_YEAR_2019_in_Taiwan

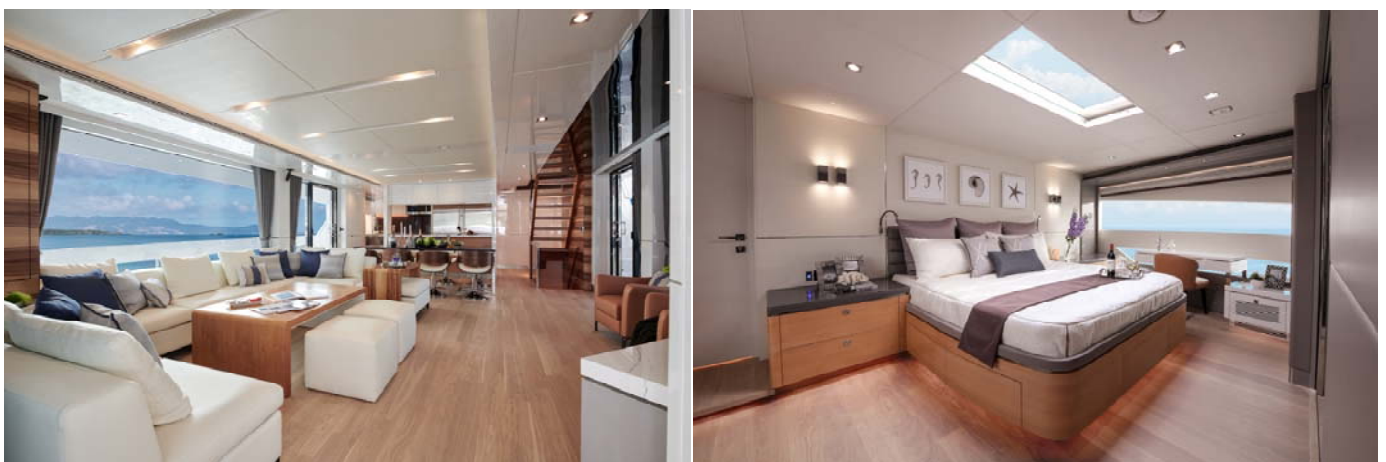


Taiwan SNAME



Horizon FD87 Skyline – Cutting-Edge Design and Flexible Performance

Featuring the new High Performance Piercing Bow (HPPB), the Horizon FD87 Skyline fast displacement motoryacht is at the forefront of innovation in her class, offering highly flexible cruising speeds combined with cutting-edge designs inside and out. While alternative bow designs that feature protrusions work more efficiently at either high or slower speeds, equipped with twin CAT-1136hp engines and a fuel capacity of 3,480 gallons. Her top speed is estimated at 16.6 knots and she offers a 1,780nm range at an 10-knot cruise.



The FD87 Skyline's exterior and interior layouts were designed to take full advantage the volume provided by her 23'2" beam, with separate areas for entertaining, relaxing, and enjoying the surroundings. A total of five en suite guest staterooms are on board -- a full-beam, on-deck master stateroom and four guest

staterooms below deck – as well as crew quarters just forward of the engine room. The FD87 Skyline is a truly advanced, mid-range motoryacht that incorporates cutting-edge design with functional living and entertaining spaces that are comparable to most 100+ yachts.



Outdoor entertaining is one of the core elements of the FD87 Skyline's design, opening up a realm of alfresco possibilities. Between the aft deck, flybridge and forward bow, owners and guests can relax on the sunpads, lounge with a cocktail from the bar or dish from the grill, or simply take in the view. The FD87 Skyline also features a spacious beach club and swim platform aft, which provides a perfect spot for relaxing close to the water or enjoying watersports activities.



WWW.HORIZONYACHT.COM
HORIZON GROUP | +886 7 860 7770 | info@horizonyacht.com

Only shipyard to receive four Taiwan Excellence Gold Awards
14th consecutive winner of Asia Boating Awards

