

Liuxin--Featured Ship of the Year 2023 in Taiwan



Taiwan SNAME



Passenger ship planning and design

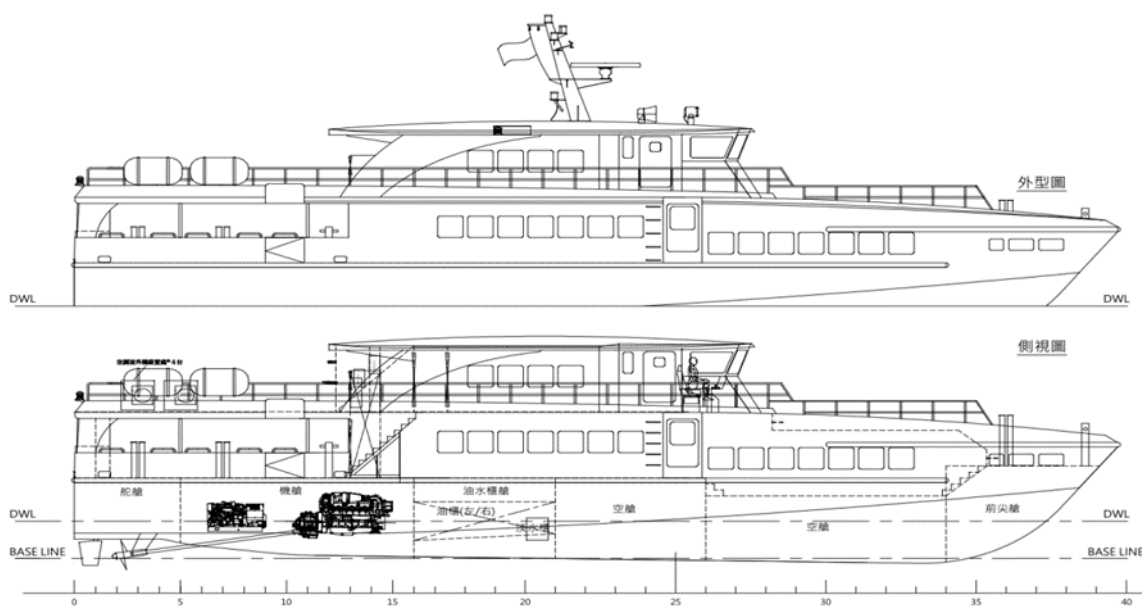
- ◇ Adopt a hard-edged deep V-shaped ship that takes both speed and wave resistance into account. It has better wave resistance. In order to take into account the effect of the speed of the ship and the beating of the bottom of the ship. It is desirable that the height of the ship's bottom be 20 angle.
- ◇ Lightweight design to moderately increase the strength of the hull structure. The operating speed of this ship is 30 knots, and the wind and wave resistance must reach Class 7 or above. It is a standard high-speed light-frame ship. Improve the strength of the hull against waves and at the same time increase the service life of the hull.
- ◇ Flexible planning of rear deck space. Except for the usual cargo. Set up fixed buckles and tie holes, and use elastic planning to carry the locomotive space.



SHING SHENG FA BOAT BUILDING CO., LTD

<https://www.ssf.com.tw> / E-mail: ssfboat@gmail.com / Tel: 886-7-5715631

- ◇ Friendly barrier-free facilities. At least one toilet door with a width of more than 80cm can be used by people with disabilities. Wheelchair accessible door, net the width shall not be less than 80 cm. If the wheelchair cannot pass alone, a lift for the wheelchair to go up and down shall be provided. Lifting equipment ramps or assistive devices, and send special personnel to serve.
- ◇ Spacious and comfortable cabin space. Seats that meet the standards of high-speed passenger ship are used, which are both safe and comfortable . The double aisle design is adopted to reduce the time required for passengers to get on and off the ship. In an emergency, passengers can escape more smoothly.



General Arrangement Plan



Cab



Cabin



SHING SHENG FA BOAT BUILDING CO., LTD

<https://www.ssf.com.tw> / E-mail: ssfboat@gmail.com / Tel: 886-7-5715631